

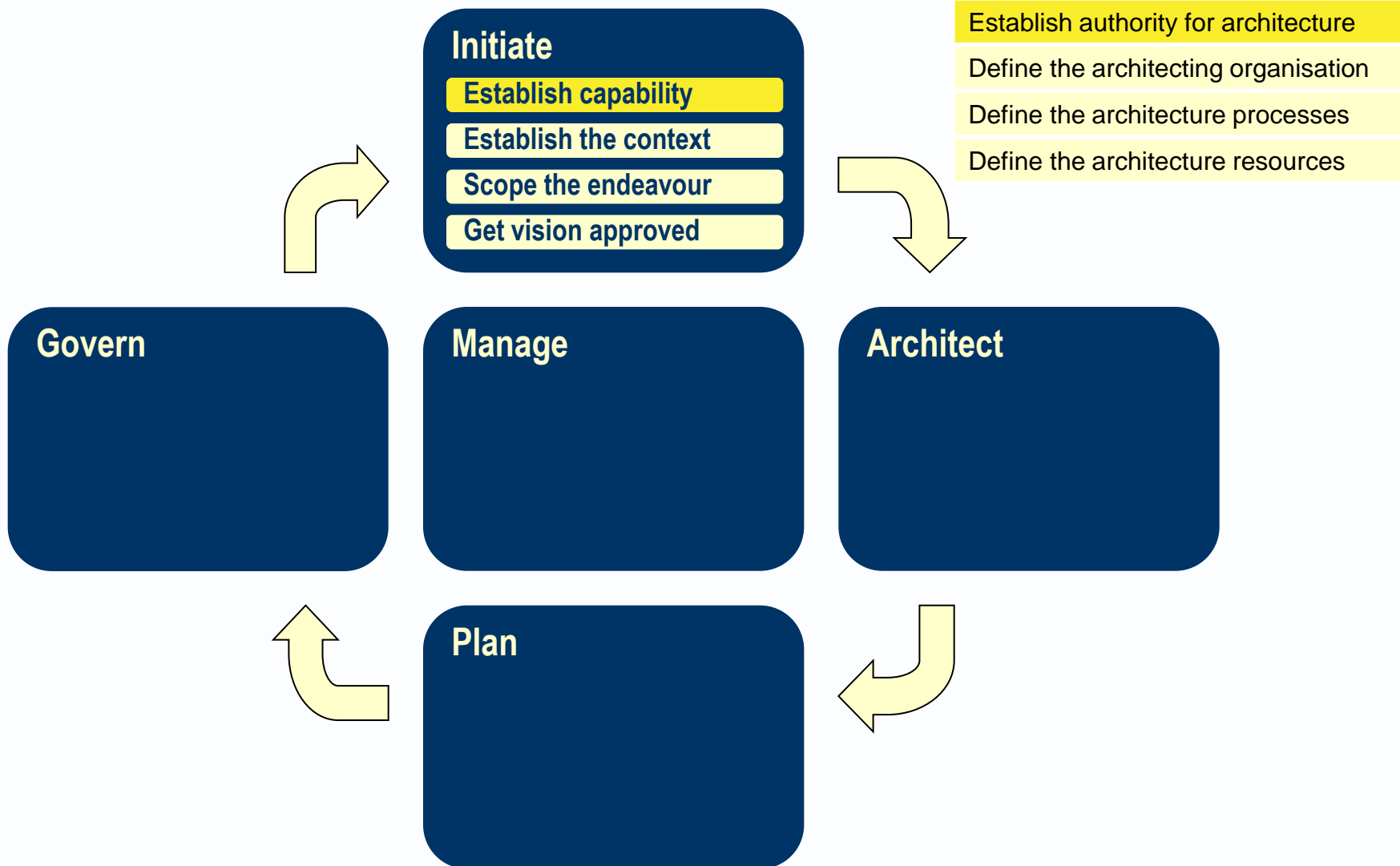
Avancier Methods (AM)

INITIATE

Establish the authority for architecture

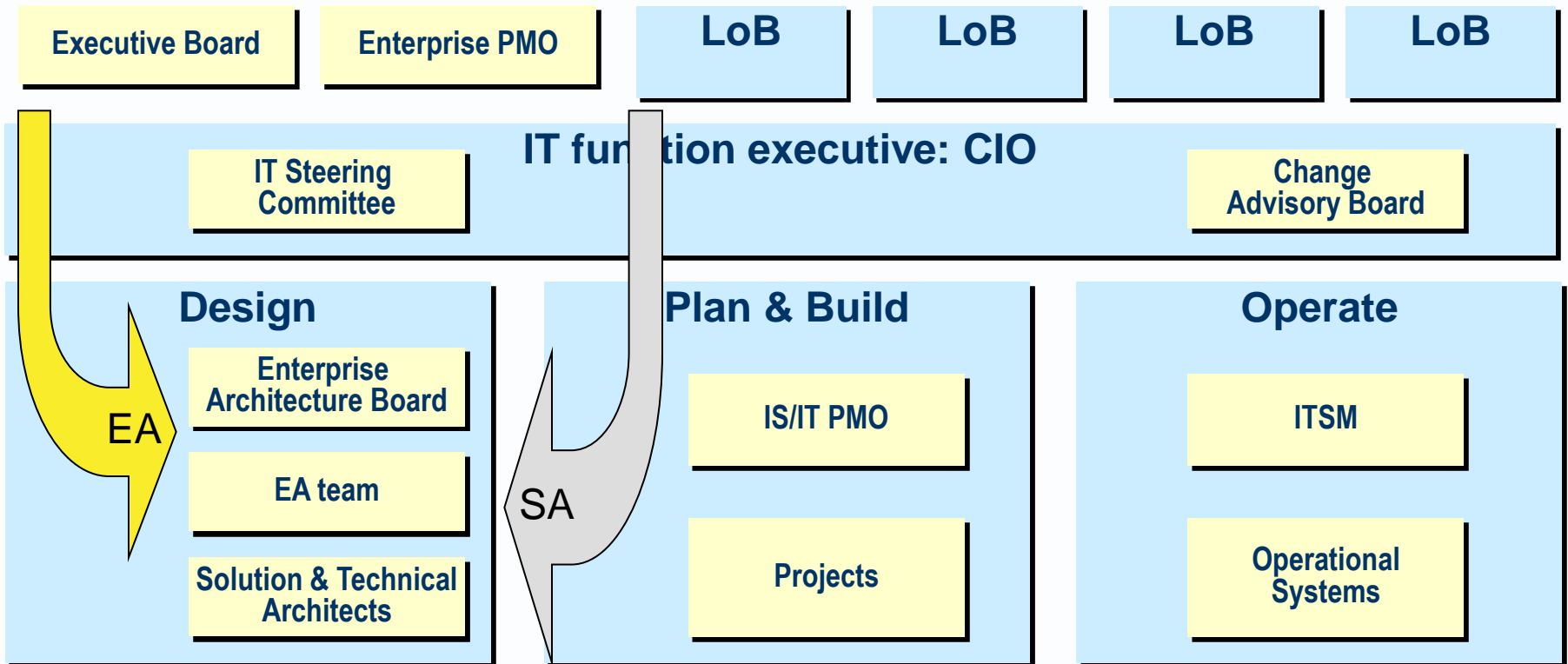
It is illegal to copy, share or show this document
(or other document published at <http://avancier.co.uk>)
without the written permission of the copyright holder

Establish the authority for architecture



Establish authority for architecture

Identify sponsor(s)

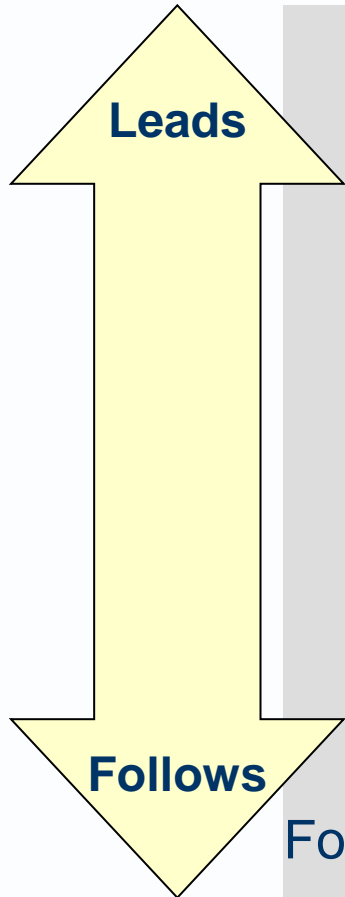


Does the CIO have a seat at the leadership table?

- ▶ “if IT is to drive business innovation, the CIO needs to be a member of the business leadership team and *embed the IT strategy* in the business strategy [not a merely react to it].
- ▶ “[However, studies suggest]
 - less than half of CIOs have a seat at the leadership table. The last study I saw placed the number around at 43%.
 - most business leaders view IT as a source of efficiency as opposed to a source of business innovation.
- ▶ The result: most organizations treated IT as a cost to be controlled rather than a strategic asset to be leveraged for competitive advantage.

After Steve Romero, IT Governance Evangelist

What "IT Archetype" fits the enterprise?



- The "Partner Player" IT organisation
 - The CIO is on the leadership team
 - IT takes a front-and-center role in business strategy.

- For "Trusted supplier" IT organisation
 - Some CIOs stand by in the wings
 - Some CIO's sit at the leadership table.

- The "Utility" IT organisation
 - IT react to business strategy
 - Ensure IT enables and supports the strategy.

Forrester's IT Archetype model <http://bit.ly/cpBAhp>,

How does the IT strategy affect the business strategy?

- ▶ How can the IT strategy help the enterprise succeed?
 - the information strategy?
 - the applications strategy?
 - the data quality strategy?
 - the technical infrastructure strategy

- ▶ How do you design, implement and manage a strategic planning process that appropriately integrates IT strategy into the business strategy?

How do strategies lead to change plans?

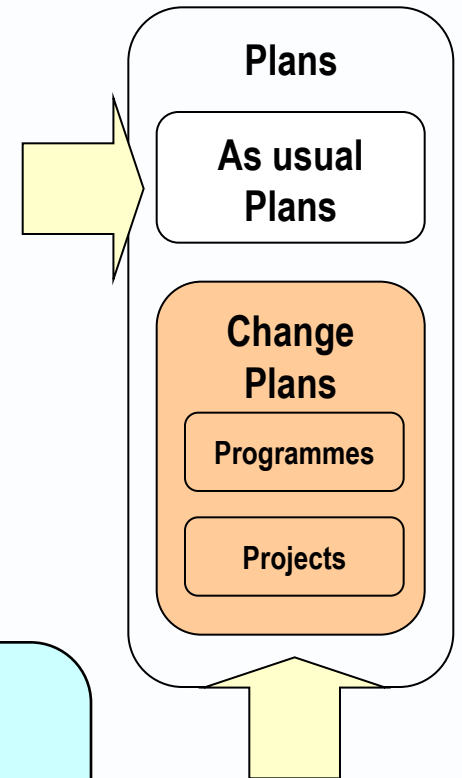
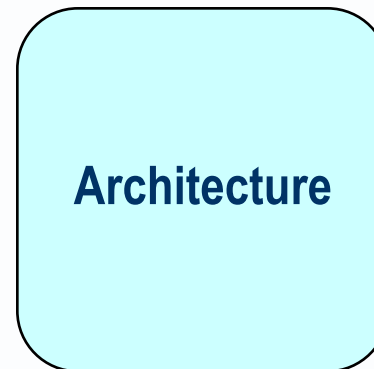
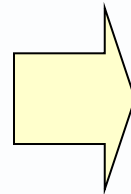
As-usual strategies

Maintain structure and behaviour
Repeat
Stabilise or contract
Expand in terms of volume

The road can be travelled with existing vehicles
No transformation necessary

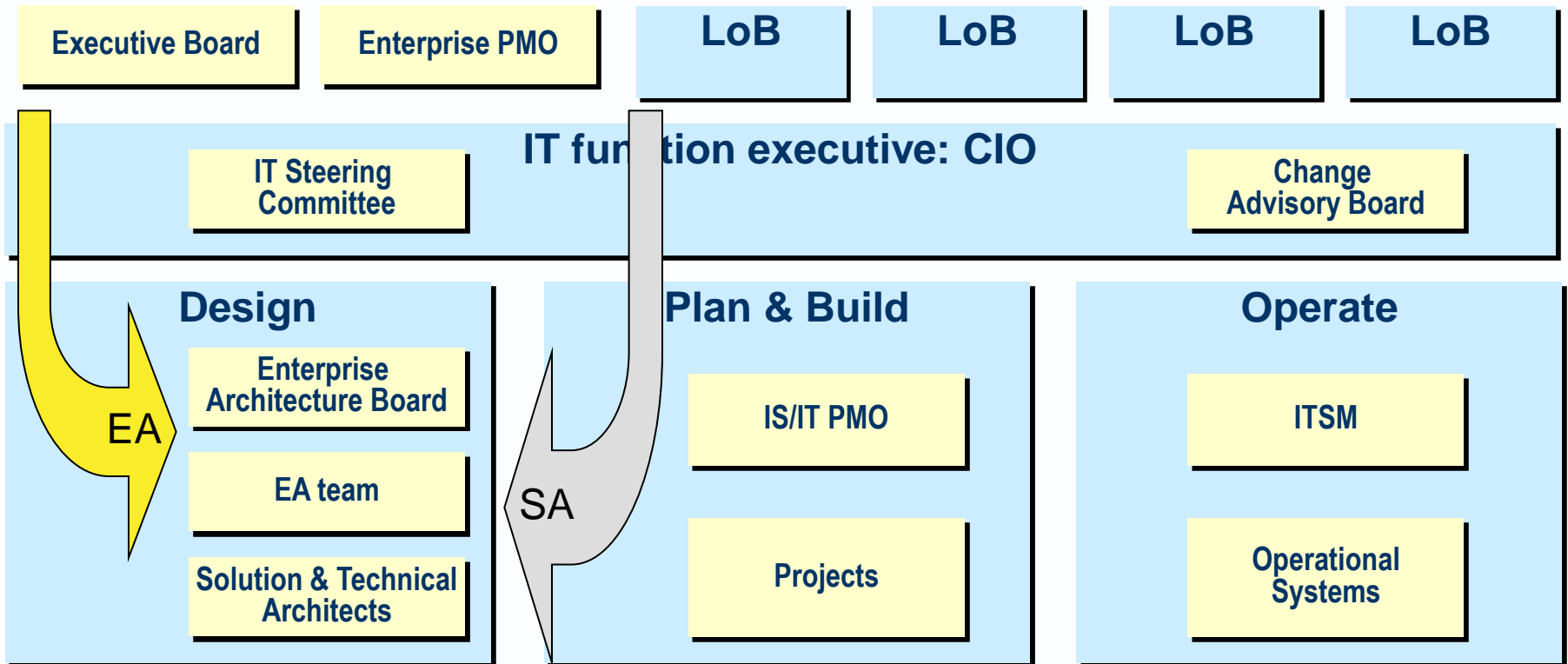
Transformational strategies

New structure / behaviour
Changed structure / behaviour
Standardise
Integrate



Establish authority for architecture

Establish how requests for architecture work arise



Establish authority for architecture

- ▶ Agree EA funding model or ROI metrics
- ▶ Assess EA maturity

Establish authority for architecture

Define the architecting organisation

Define the architecture processes

Define the architecture resources

- ▶ Then go on to build a methodology that results in effective employment of architects on programmes and projects.
 - Processes
 - Organisation
 - Documentation and other resources

Establish the authority for architecture

